

# PRODUCT CATALOGUE



SIÈGE SOCIAL : 261 LOGEMENTS PANORAMA 1.BLOC F BOULEVARD  
MILLIENIUM,BIR EL DJIR



SHOWROOM : 27, RUE MOHAMMED KHEMISTI,ORAN, ALGERIE



Contactez nous

commercial@betahealthdz.com



0770 180 133



Beta Health



## Company Milestones



Beta Health

- 1989** First MRI in China
- 1991** First High-tech Enterprise in Shenzhen, Guangdong
- 1991** First High-tech Enterprise in Chinese Medical Device Industry
- 1992** China's First Superconducting MRI 0.6T
- 1992** China's First High-precision Stereo-tactic
- 1994** Top One Hundred National High-tech Enterprise
- 1995** First PACS in China
- 1998** First Open MRI with Permanent Magnet in China
- 2000** First Neurosurgical Navigation System in China
- 2002** China's First Mammography System ASR-3000
- 2004** Guangdong Top One Hundred High-tech Enterprise
- 2009** First Mobile CT in China
- 2010** China's First Superconductive MRI 1.5T
- 2012** Launched FPD Digital Mammography
- 2013** The World's First Non-contact Slip-ring 16-slice Spiral CT
- 2014** Third Generation 1.5T Superconducting MRI
- 2015** China's First High-end Dental CT
- 2016** Launched Precision Platform CT Systems
- 2017** Launched Non-contact Slip-ring 128-slice Spiral CT
- 2018** China's First Vehicle-mounted CT
- 2019** Fit Platform Multi-slice CT Series Released
- 2020** ANATOM Precision AI-powered 128-slice Spiral CT Launched
- 2021** High-end ANATOM S800 256-slice and ANATOM S400 128-slice Spiral CT Launched

## NEW GLOBAL STRATEGY MAKE GLOBAL BECOMES GLOCAL



## Chinese Medical Trailblazer and Pioneer Established in 1986

**11000+** users and hospitals globally

**1980+** MRI & **2100+** CT & **3000+** X-Ray products installations

Export to **45+** countries & regions worldwide

Footprints reached: Venezuela, Argentina, Brazil, Peru, Colombia, Mexico, Turkey, UAE, Egypt, Yemen, Italy, Germany, Romania, Philippines, Indonesia, Vietnam, Myanmar, Bangladesh, India, Pakistan, Kenya, Nigeria, Ethiopia, South Sudan, Cote d'Ivoire, Gabon, Cameroon, Zambia, Ghana, Russia, Tajikistan, Kazakhstan, Uzbekistan, Ukraine.....

## SuperMark 1.5T

AI Combined & Iso-Matrix MRI



- Short bore superconducting magnet with high homogeneity
- Helium saving design (700L Max.) with truly “0” boil-off
- Soft-sound technology for comfortable scanning
- ART (Adaptive and Rapid Total) imaging platform
- AI technology for improving operational efficiency

## OPENMARK 5000

High-level Permanent MRI



- Truly mid-field permanent magnet, up to 0.51T
- Unique shimming technology, Max. FOV = 40cm
- Accu-Form gradient system with powerful output
- New generation imaging platform with AI technology

## OPENMARK 4000

A Small Step to Success

- C-shaped magnet with large openness (up to 320°)
- New generation imaging platform with AI technology
- More comprehensive applications, higher scanning speed
- Compact design saving 30% space of site



## OPENMARK III

Compact design, Giant leap

- Maintenance-free thermostatic magnet
- Compact design saving 30% space of site
- New generation imaging platform with AI technology
- High return on investment with ultra-low operating cost



## **ANATOM S400 ANATOM S800**

- AI-based intelligent whole-body spectrum CT
- New generation OptiWave detector
- Precise patient positioning system
- Ultra-fast gantry rotation speed
- High-fidelity imaging system
- Comprehensive coronary CTA imaging technology

## **ANATOM 16 HD / ANATOM 64 Clarity / ANATOM 64 Precision / ANATOM Precision**

- World leading precision technology platform
- Lower dose and higher image quality system
- Intelligent interface and workflow
- New generation OptiWave detector
- Admir<sup>3D</sup> iterative reconstruction technology
- AccuSpin dual-energy imaging technology
- AccuTilt dual-mode gantry tilt technology





## **ANATOM 32 Fit / ANATOM 64 Fit / ANATOM A200**

- High efficiency new generation OptiWave™ detector
- Admir<sup>3D</sup> iterative reconstruction technology
- Adose<sup>3D</sup> dose management platform fits your dose
- Comprehensive routine clinical applications
- DigiTilt gantry tilt technology fits your efficiency
- Versatility fits costs for running your successful business

## **DENTOM CT**

World's Class Dental Cone Beam CT System

- Large size amorphous silicon flat panel detector
- Super large field high resolution 3D imaging
- MetalCARE metal artifact correction technology
- BoneCARE correction techniques for bony artifact
- NoiseCARE noise reduction correction technology
- Equipped with a powerful post processing software



## ASR-4000 Series

Digital Mammography System

- High-end hardware component
- Multi-configuration available for your options
- L-Dose dose optimization technology
- I-Pose intelligent positioning technology
- F-Comp flexible compression technology
- E-View excellent working platform



## ASR-6850P series

Classic Floor-mounted DR System

- Various configurations available for your needs
- Mobile multi-functional FPD fulfills different clinical scenarios
- Integrated four-way floating patient table
- Intelligent LCD touch screen for byside parameter settings
- Whole spine scan applicable as an option for special need
- Professional and abundant protocols for different cases





## ANATOM Vet

32-slice CT System Taking Care of Your Pets

- Compact design to fit your cost and space
- Dedicated vet protocols support all clinical needs with high image quality
- Large space makes more comfortable exam and easier operation



## OPENMARK Vet

C-shape Permanent MRI System Taking Care of Your Pets

- Integrated electric patient table to provide more convenient operation
- Dedicated vet protocols support all clinical needs with high image quality
- Large openness makes more comfortable exam and easier operation



# Mobile CT Solutions



Bus version



# Mobile CT Solutions



Shelter version

- Emergency rescue, fast and convenient
- Field medical, specialized for military usage
- Anti-epidemic case, efficient and practical
- Materials suitable for disinfection
- Separate personnel and patient channels to avoid cross infection
- Wireless control, unlimited security
- Nervous system, respiratory system
- Bone and joint, tumor screening etc.
- Plain and enhanced scans, comprehensive clinical applications



Truck version

# High Pressure Injection Systems

## ASA-200E

Single-syringe System

- New control platform, stable performance & friendly interface
- 100 sets of storable injection programs
- The double-operation working platform makes the scanning room and the operation room integrated
- "Air-exhausted confirmation" button to ensure safe injection



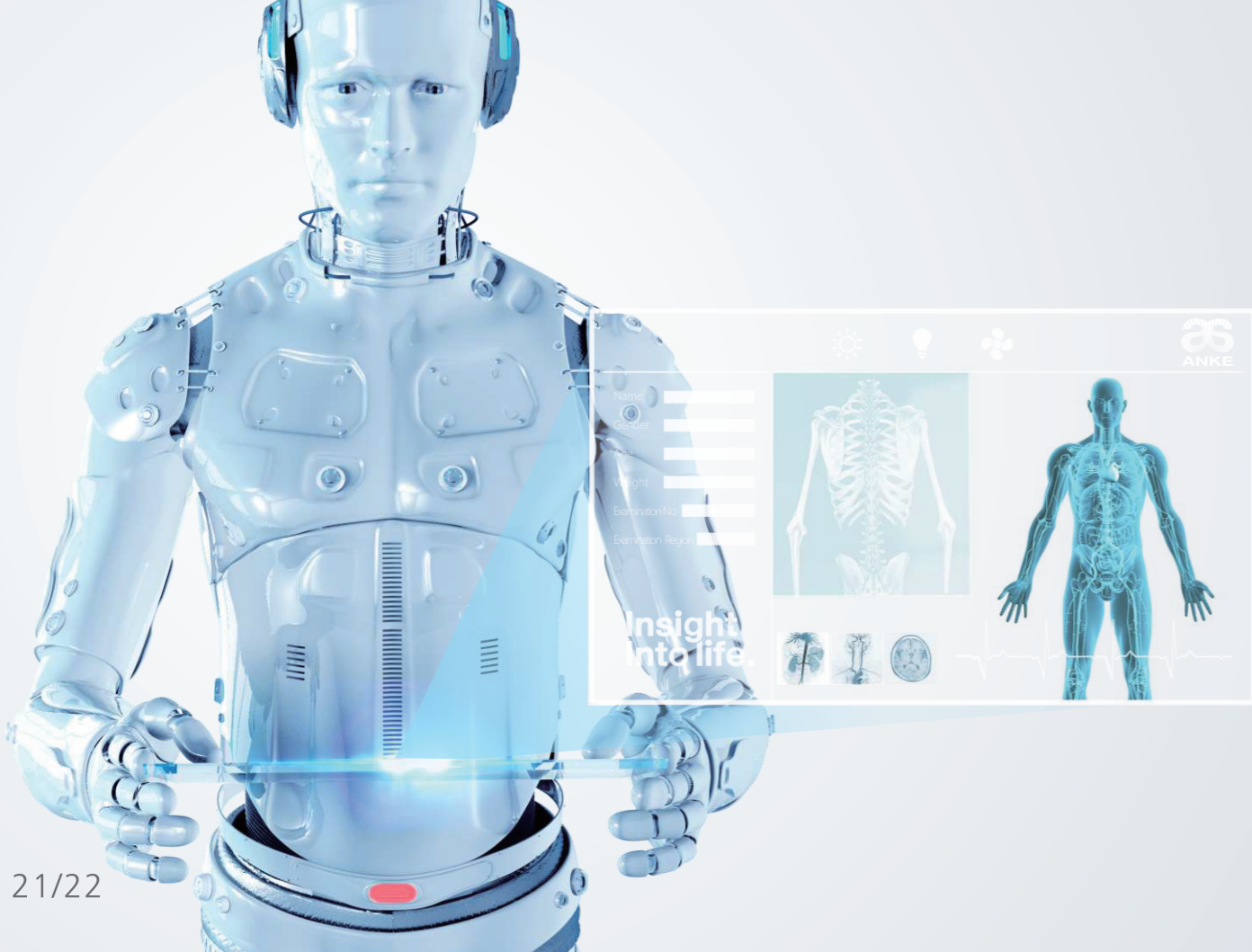
# High Pressure Injection Systems

## ASA-300

Dual-syringe System

- Large touch screen for easy and convenient usage
- A variety of input and output methods compatible to link with a variety of imaging equipment
- Automatic sound and light alarms indicate the pressure limit while stopping the injection
- The real-time indicator flashes to remind the injection process.





## EXTREME IMAGE SMART MEDICAL

Artificial Intelligence based technology assists medical imaging diagnosis.

- Auto Segmentation
- Auto Location
- Auto Measurement of lesion

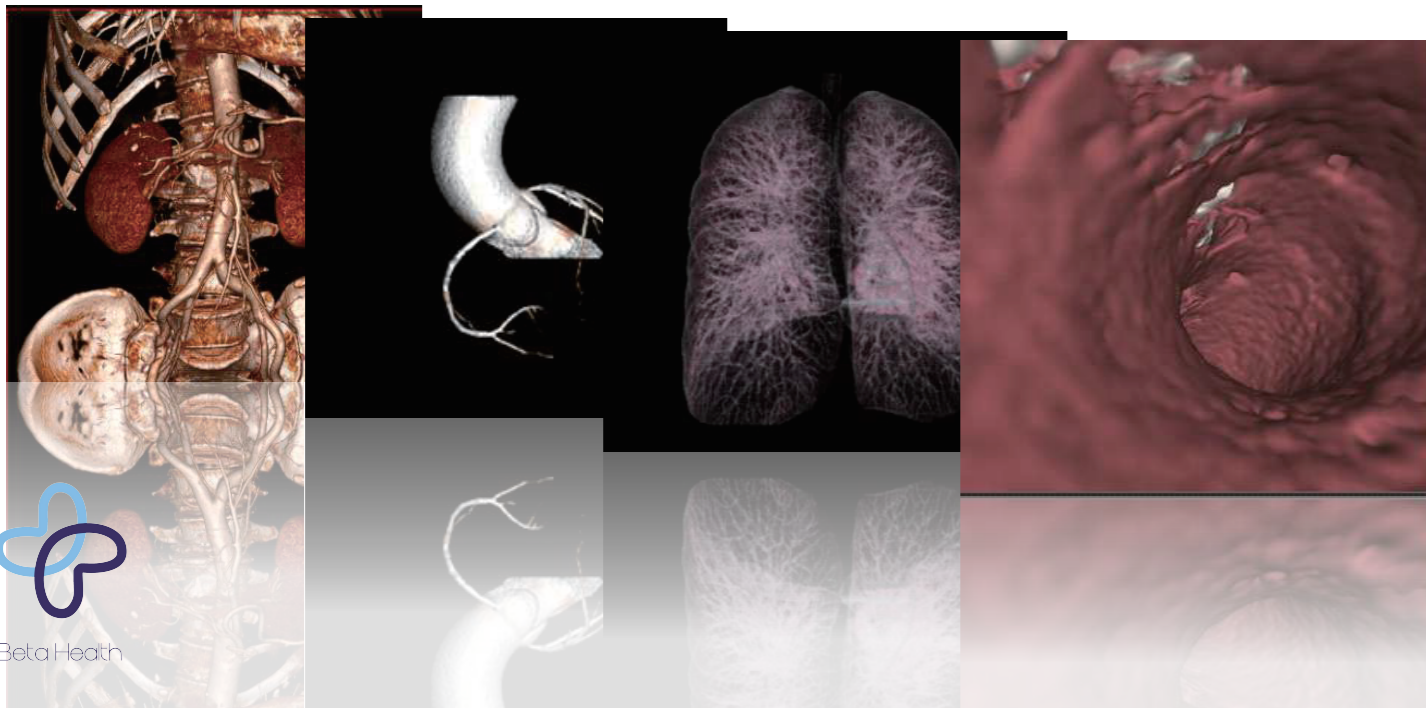


# ANKE Workstation

AI based advanced workstation

## Auto segmentation

Automatic segmentation of bone, lung, coronary artery and other blood vessel.



Beta Health



## Auto location and measurement of disease

### Pneumonia analysis

Automatic location and measurement pneumonia. Comparison of old and new data can monitor patient prognosis.

### Nodule analysis

Automatic location and measurement lung nodule. Comparison of old and new data can follow up lesions progression.

### Emphysema analysis

Automatic measurement lung emphysema to evaluation respiratory function.

### Coronary analysis

Automatic segmentation and extraction centerline of the different branch of coronary artery, calculation of vessel stenosis, measurement atherosclerotic plaques and clots composition.

### Vascular analysis

Automatic segmentation and extraction centerline of blood vessel. Calculation of vessel stenosis, measurement atherosclerotic plaques and clots composition.

### Brain hemorrhage analysis

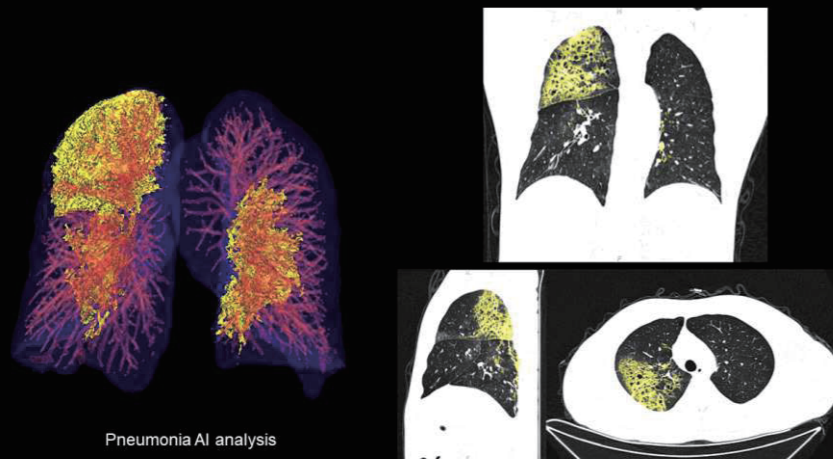
Automatic location and measurement brain hemorrhage.

### Dental analysis

Automatic tooth panorama and each tooth slice, neural tube analysis, TMJ analysis.

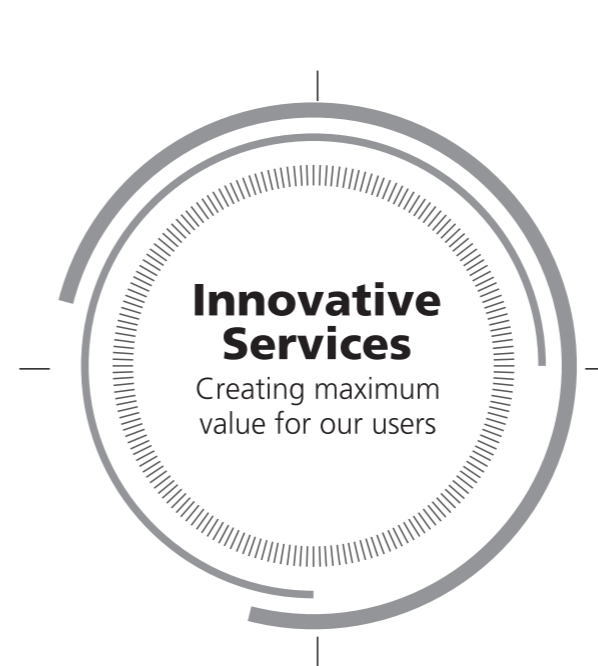
## ANKE's AI Technology Solutions

A short-time AI imaging analysis technology 30 seconds to automatically determine the location of pneumonia, providing the accurate and effective results for doctors.



**To fight against COVID-19,**  
ANKE is on the way.

From the moment you choose ANKE, our all-round cooperation begins. Once you are in ANKE's global customer service system, you will experience a complete service solution that is all you expect, all you want and all you need.



### Service Platform

- 24-hour call centre service
- Spare parts guarantee in the spare parts centre
- Professional tools for efficient insurance



### Service Quality

- One-to-one service by technical experts
- Preventive maintenance
- Timely detection of hidden problems



### Service Network

- Over 100 engineers
- Over 30% technical experts
- R&D-led technical support centre



### Service Efficiency

- Remote support
- Fast problem solving
- Efficient dispatch to reduce time



## SuperMark 1.5T

AI Combined & Iso-Matrix MRI

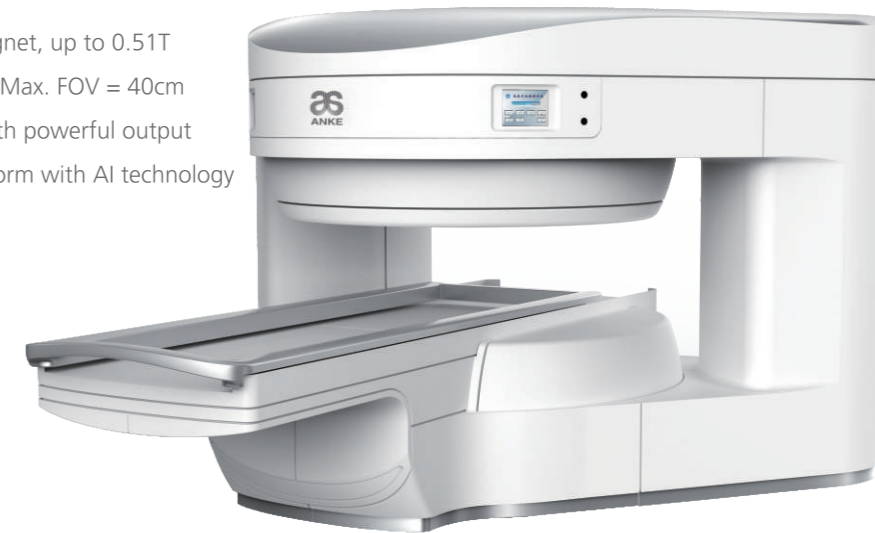
- Short bore superconducting magnet with high homogeneity
- Helium saving design (700L Max.) with truly "0" boil-off
- Soft-sound technology for comfortable scanning
- ART (Adaptive and Rapid Total) imaging platform
- AI technology for improving operational efficiency



## OPENMARK 5000

High-level Permanent MRI

- Truly mid-field permanent magnet, up to 0.51T
- Unique shimming technology, Max. FOV = 40cm
- Accu-Form gradient system with powerful output
- New generation imaging platform with AI technology





Beta Health



SIÈGE SOCIAL : 261 LOGEMENTS PANORAMA 1.BLOC F BOULEVARD  
MILLIENIUM,BIR EL DJIR

SHOWROOM : 27, RUE MOHAMMED KHEMISTI,ORAN, ALGERIE

Contactez nous

commercial@betahealthdz.com



0770 180 133

